

# CLARR TWO ARRIVAL

LAS VEGAS APP CON  
 125.025 282.2  
 LAS VEGAS TOWER  
 118.75 257.8 (Rwy 1L/19R, 1R/19L)  
 119.9 257.8 (Rwy 7L/25R, 7R/25L)  
 NORTH LAS VEGAS TOWER\*  
 125.7 360.75  
 LAS VEGAS ATIS  
 132.4  
 NORTH LAS VEGAS ATIS  
 118.05

LOCALIZER 110.3  
 I-LAS  
 Chan 40

LAS VEGAS  
 116.9 LAS  
 Chan 116

LOCALIZER 111.75  
 I-RLE  
 Chan 40

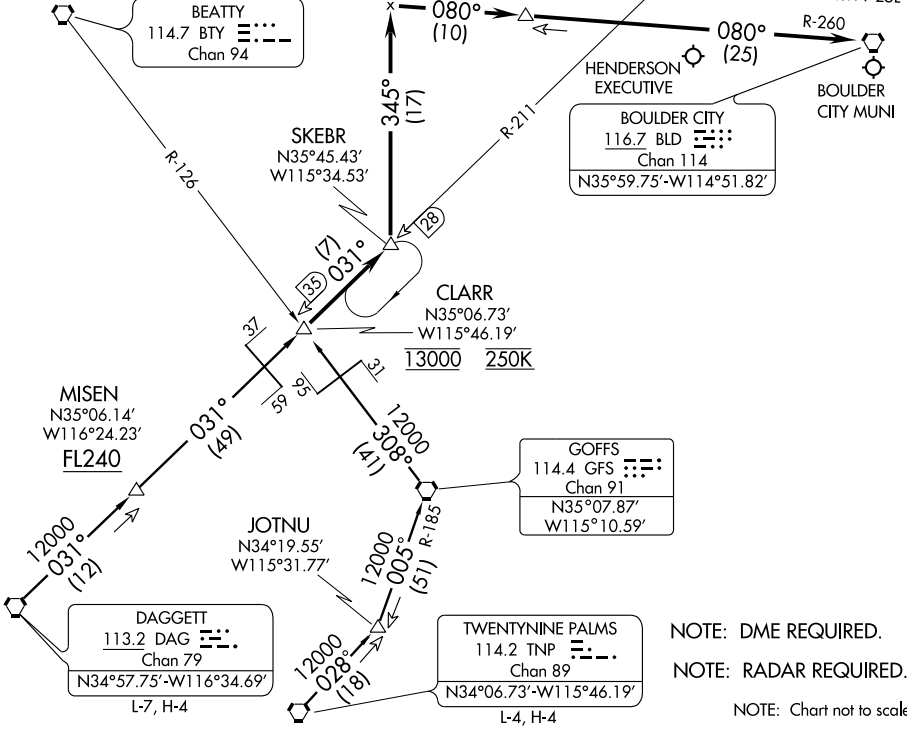
RWY 25R  
 255°  
 RWY 25L  
 255°

(ISSAR)  
 N36°02.66'  
 W115°34.53'

IPUMY  
 N36°01.86'  
 W115°22.52'

BEATTY  
 114.7 BTY  
 Chan 94

BOULDER CITY  
 116.7 BLD  
 Chan 114  
 N35°59.75'-W114°51.82'



NOTE: DME REQUIRED.  
 NOTE: RADAR REQUIRED.  
 NOTE: Chart not to scale.

**DAGGETT TRANSITION (DAG.CLARR2):** From over DAG VORTAC via DAG R-031 and LAS R-211 to CLARR INT. Thence. . .

**TWENTYNINE PALMS TRANSITION (TNP.CLARR2):** From over TNP VORTAC via TNP R-028 to JOTNU INT, then via GFS R-185 to GFS VORTAC, then via GFS R-308 and BTY R-126 to CLARR INT. Thence. . .

....From over CLARR INT via LAS R-211 to SKEBR INT. Thence. . .

**LANDING McCARRAN INTL:** Via heading 345° to intercept the BLD R-260 to BLD VORTAC. Rws 1L/R, 7L/R, and 19L/R expect radar vectors for visual approach prior to BLD VORTAC. Rws 25L/R expect ILS approach procedure.

**LANDING NORTH LAS VEGAS, HENDERSON EXECUTIVE, and BOULDER CITY MUNI:** After SKEBR INT expect radar vectors to airport.

# CLARR TWO ARRIVAL

SW-4, 27 AUG 2009 to 24 SEP 2009

SW-4, 27 AUG 2009 to 24 SEP 2009