

WAAS CH 78418 W12A	APP CRS 121°	Rwy Idg 10855 TDZE 510 Apt Elev 510
--	------------------------	--

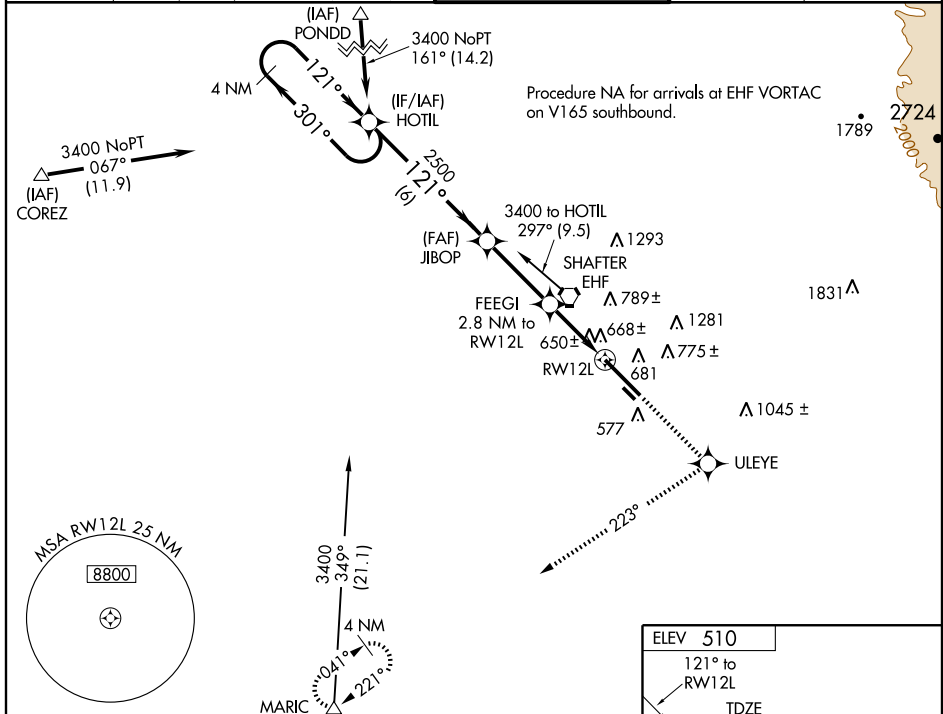
RNAV (GPS) RWY 12L

BAKERSFIELD/MEADOWS FIELD (BFL)

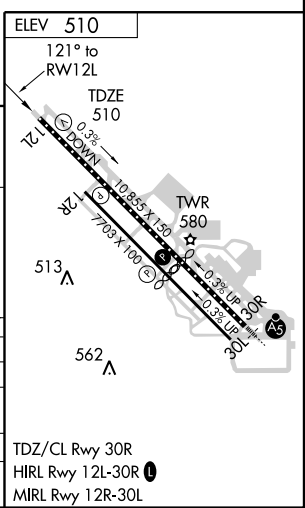
⚠ Circling NA northeast of Rwy 12L/30R. Baro-VNAV NA when using Porterville altimeter setting. For uncompensated Baro-VNAV systems, LNAV/VNAV NA below -16°C (4°F) or above 48°C (118°F). DME/DME RNP-0.3 NA. Visibility reduction by helicopters NA. When local altimeter setting not received, use Porterville altimeter setting and increase all DA 92 feet, all MDA 100 feet, increase LPV all Cats, LNAV/VNAV all Cats and LNAV Cats C/D visibility ¼ mile.

⚠ MISSED APPROACH: Climb to 3000 direct ULEYE and right turn on track 223° to MARIC and hold.

ATIS 118.6	BAKERSFIELD APP CON* 118.8 284.625 118.9 270.3 (SOUTH) (NORTH)	BAKERSFIELD TOWER* 118.1 (CTAF) 257.8	GND CON 121.7	UNICOM 122.95
----------------------	---	---	-------------------------	-------------------------



4 NM Holding Pattern		HOTIL		JIBOP		MARIC	
3400 ← 301°		121° →		2500		*LNAV only	
GS 3.00°		2500		FEEGI 2.8 NM to RW12L		RW12L	
TCH 52		6 NM		3.2 NM		2.8 NM	
*1440							
CATEGORY	A	B	C	D			
LPV DA	760-1			250 (300-1)			
LNNAV/VNAV DA	1073-2			563 (600-2)			
LNNAV MDA	920-1 410 (500-1)		920-1½ 410 (500-1½)				
CIRCLING	940-1 430 (500-1)		960-1 450 (500-1)		1060-2 550 (600-2)		



SW-3, 26 AUG 2010 to 23 SEP 2010

SW-3, 26 AUG 2010 to 23 SEP 2010