

ILS RWY 8

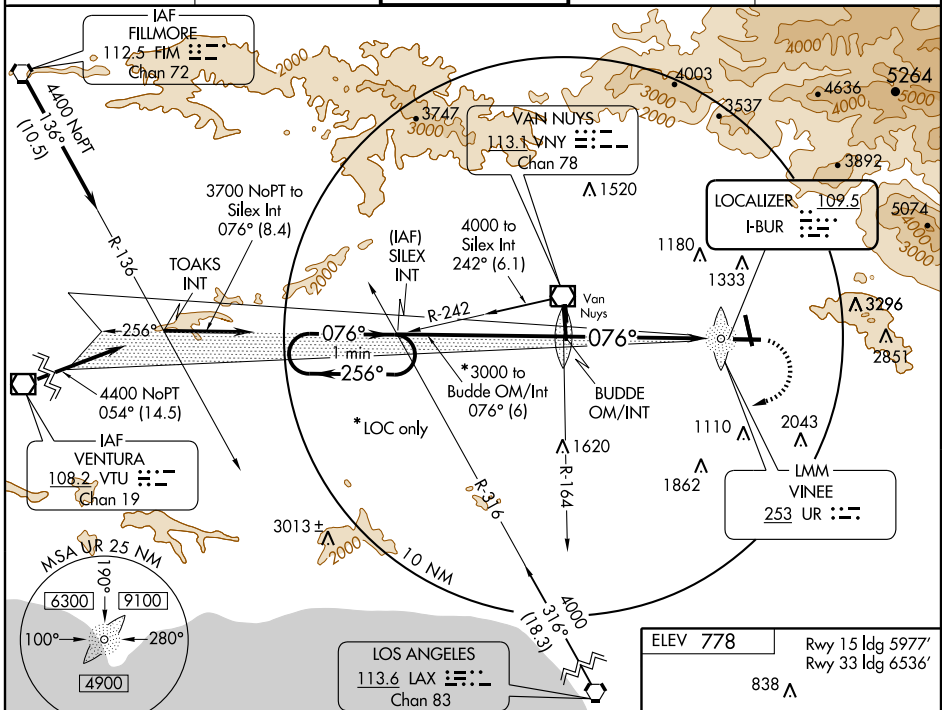
BURBANK/BOB HOPE (BUR)

LOC I-BUR 109.5	APP CRS 076°	Rwy ldg TDZE Apt Elev	5801 727 778
---------------------------	------------------------	-----------------------------	---

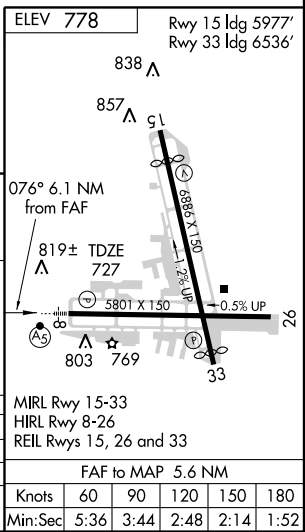
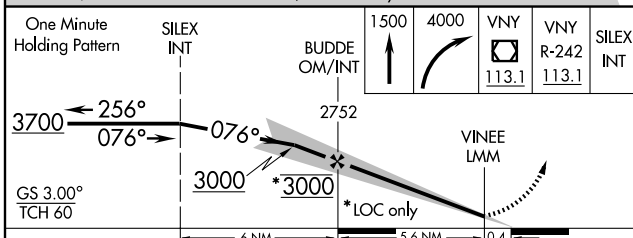
⚠ Circling not authorized Northeast of airport between extended centerlines of runways 15-33 and 8-26. ILS unusable from Vinee LMM inbound. Autopilot coupled approaches not authorized below 977 MSL. Inoperative table does not apply.

MALSRL
MISSED APPROACH: Climb to 1500 then climbing right turn to 4000 direct VNY VOR/DME then via VNY R-242 to SILEX Int and hold.

ATIS 134.5	SOCAL APP CON 134.2 338.2	BURBANK TOWER 118.7 254.3	GND CON 123.9 348.6	CLNC DEL 118.0
----------------------	-------------------------------------	-------------------------------------	-------------------------------	--------------------------



Note missed approach climb requirements: Terrain in the missed approach area requires a rate of climb of at least 430 FPM/100K, 640 FPM/150K, 850 FPM/200K, no wind conditions; if unable to meet rate of climb, see LOC Rwy 8.



CATEGORY	A	B	C	D	
S-ILS 8	977/50 250 (200-1)				
S-LOC 8	1140/50	413 (400-1)	1140/60	413 (400-1½)	
CIRCLING	1220-1 442 (500-1)	1300-1 522 (600-1)	1300-1½ 522 (600-1½)	1440-2 622 (700-2)	
FAF to MAP 5.6 NM					
Knots	60	90	120	150	180
Min:Sec	5:36	3:44	2:48	2:14	1:52

SW-3, 01 SEP 2005 to 29 SEP 2005

SW-3, 01 SEP 2005 to 29 SEP 2005