

# ILS RWY 24

CARLSBAD/MC CLELLAN-PALOMAR (CRQ)

LOC I-CRQ <b>108.7</b>	APP CRS <b>245°</b>	Rwy ldg <b>4600</b> TDZE <b>326</b> Apt Elev <b>328</b>
---------------------------	------------------------	---

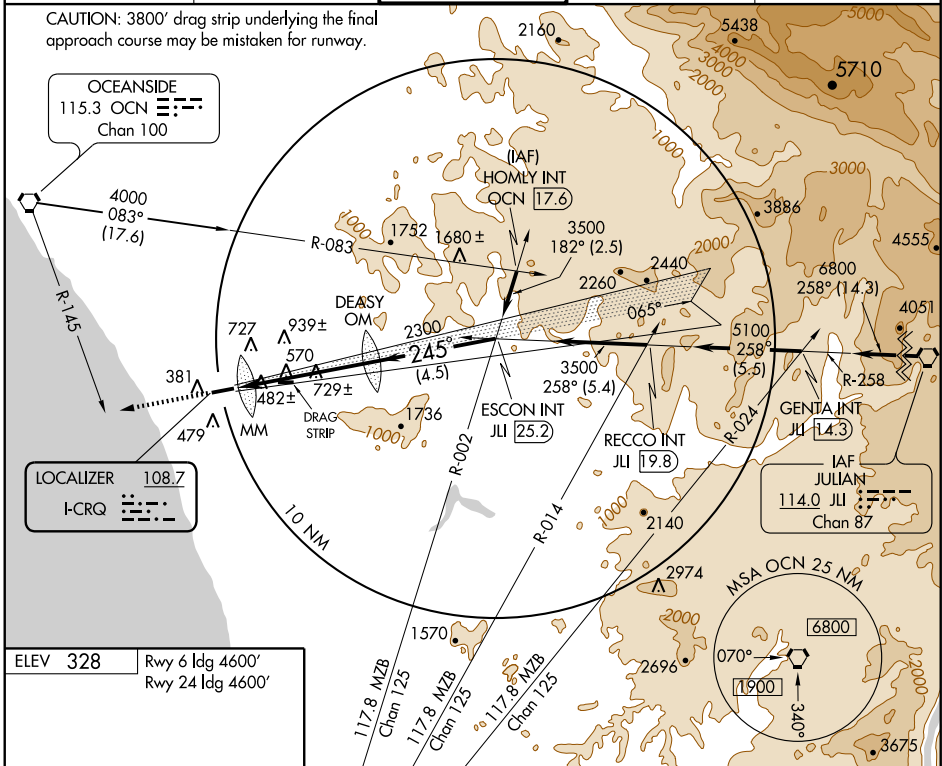
**▼** Inoperative table does not apply to S-ILS 24.  
**▲** For inoperative MALSR increase S-LOC Category A/B visibility to RVR 5000.



**MISSED APPROACH:** Climb to 3000 via heading 245° and OCN R-145 to OCN VORTAC.

ATIS <b>120.15</b>	SOCAL APP CON <b>127.3 323.0</b>	<b>PALOMAR TOWER ★</b> <b>118.6 (CTAF) 0 392.0</b>	GND CON <b>121.8</b>	CLNC DEL <b>134.85</b>
-----------------------	-------------------------------------	---	-------------------------	---------------------------

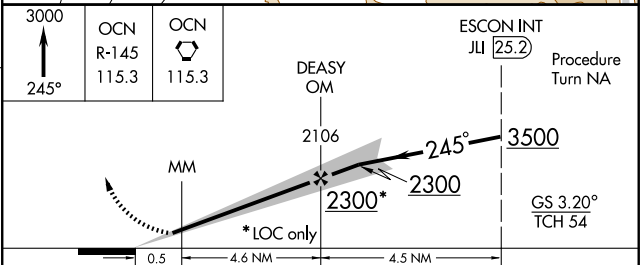
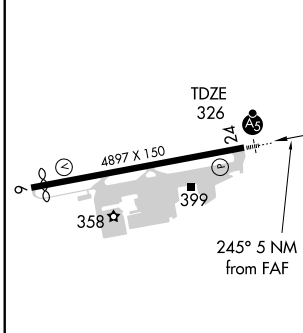
CAUTION: 3800' drag strip underlying the final approach course may be mistaken for runway.



SW-3, 01 SEP 2005 to 29 SEP 2005

SW-3, 01 SEP 2005 to 29 SEP 2005

ELEV 328	Rwy 6 ldg 4600'
	Rwy 24 ldg 4600'



REIL Rwy 24	
HIRL Rwy 6-24	
FAF to MAP 5 NM	
Knots	60 90 120 150 180
Min:Sec	5:00 3:20 2:30 2:00 1:40

CATEGORY	A	B	C	D
S-ILS 24	526/40	200 (200-¾)		NA
S-LOC 24	980/40	654 (700-¾)	980/60 654 (700-¼)	NA
CIRCLING	980-1 652 (700-1)	1000-1 672 (700-1)	1020-2 692 (700-2)	NA