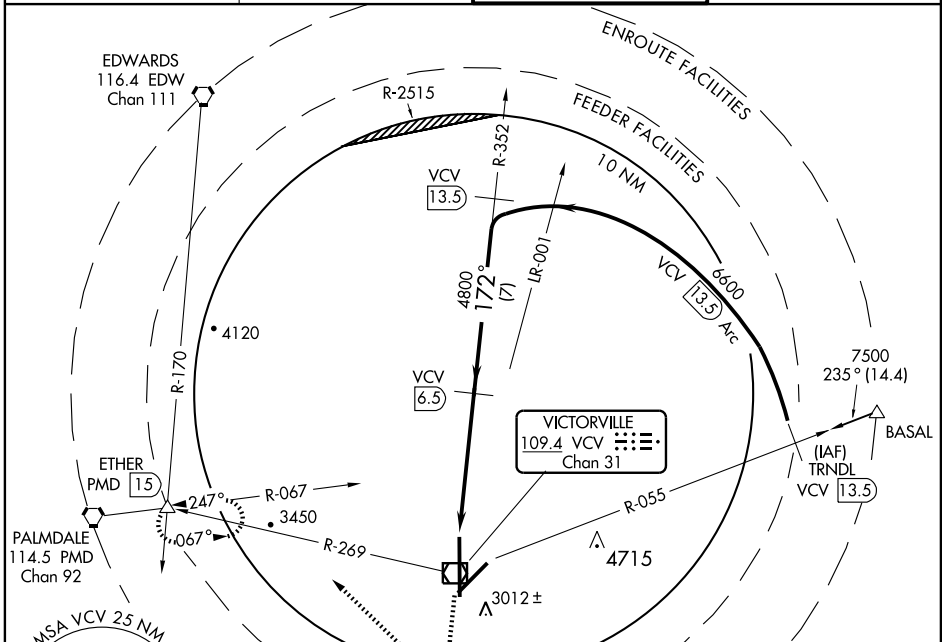


VOR/DME VCV <b>109.4</b> Chan 31	APP CRS <b>172°</b>	Rwy ldg TDZE <b>2841</b> Apt Elev <b>2885</b>
--	------------------------	--

# VOR/DME RWY 17

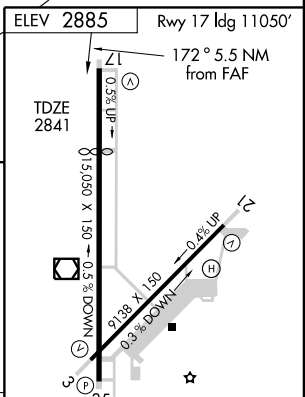
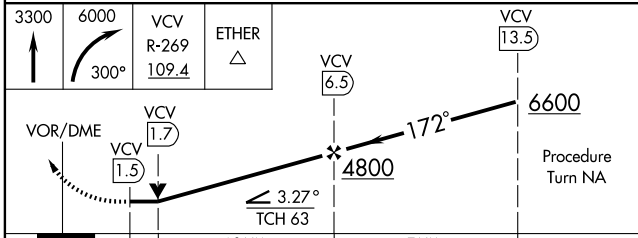
VICTORVILLE/SOUTHERN CALIFORNIA LOGISTICS (VCV)

<b>NA</b>	MISSED APPROACH: Climb to 3300, then climbing right turn to 6000 via heading 300° and VCV R-269 to ETHER Int and hold.		
AWOS-3 <b>109.4</b>	JOSHUA APP CON <b>124.55 363.0</b>	VICTORVILLE TOWER* <b>118.35 (CTAF)</b>	GND CON <b>124.45</b>



SW-3, 01 SEP 2005 to 29 SEP 2005

SW-3, 01 SEP 2005 to 29 SEP 2005



CATEGORY	A	B	C	D	HIRL Rwys 3-21 and 17-35
S-17	3200-1	359 (400-1)		3200-1 1/4 359 (400-1 1/4)	
CIRCLING	3420-1	535 (600-1)	3420-1 1/2 535 (600-1 1/2)	3580-2 1/4 695 (700-2 1/4)	Knots 60 90 120 150 180 Min:Sec