

PRFUM TWO DEPARTURE (RNAV)

SW-4, 17 DEC 2009 to 14 JAN 2010

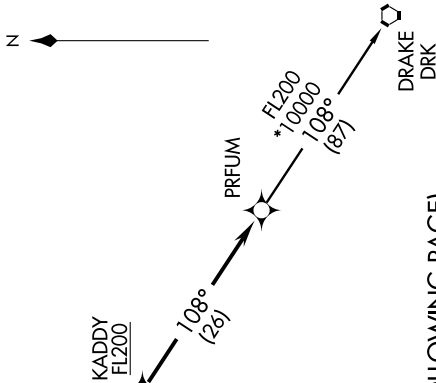
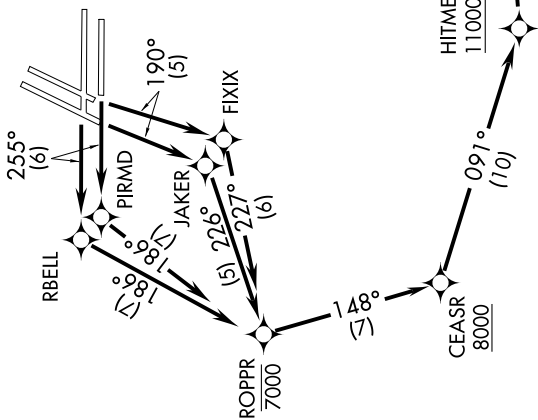
TAKE-OFF MINIMUMS

- Runways 1L/R, 7L/R, NA- air traffic.
- Runways 19L/R, standard with minimum climb of 335' per NM to 15500.
- Runway 25L, standard with minimum climb of 307' per NM to 16500.
- Runway 25R, standard with obstacle climb of 220' per NM to 2400, ATC climb of 307' per NM to 16500.

ATIS 132.4
CINC DEL
118.0 379.95
GND CON
121.1 270.8 E of 1R/19L
121.9 254.3 W of 1R/19L
LAS VEGAS TOWER
118.75 257.8 (Rwy 1L/19R, 1R/19L)
119.9 257.8 (Rwy 7L/25R, 7R/25L)
LAS VEGAS DEP CON
125.9 307.25

NOTE: RADAR REQUIRED NOTE: Chart not to scale.

- NOTE: 1. DME/DME/IRU or GPS Required.
2. RNAV 1.
3. LAS and BLD must be operational.



TAKE-OFF OBSTACLE NOTES

- RWY 19L: Multiple poles, sign, and building 1394 feet from departure end of rwy, 320 feet right of centerline, up to 51' AGL/2256' MSL.
- RWY 19R: Multiple poles, sign, and building 197 feet from departure end of rwy, 125 feet right of centerline, up to 51' AGL/2256' MSL.
- Multiple poles and building 1396 feet from departure end of rwy, 356 feet left of centerline, up to 47' AGL/2262' MSL.
- RWY 25L: Multiple poles, sign, and building 1003 feet from departure end of rwy, 251 feet left of centerline, up to 63' AGL/2256' MSL.
- RWY 25R: Multiple poles and road 675 feet from departure end of rwy, 17 feet right of centerline, up to 100' AGL/2301' MSL.
- Multiple poles and buildings 533 feet from departure end of rwy, 1 foot left of centerline, up to 150' AGL/2469' MSL.

(NARRATIVE ON FOLLOWING PAGE)

PRFUM TWO DEPARTURE (RNAV)

SW-4, 17 DEC 2009 to 14 JAN 2010