

# SHEAD FIVE DEPARTURE (RNAV)

SL-662 (FAA)

SW-4, 17 DEC 2009 to 14 JAN 2010

ATIS 1324  
 CLNC DEL  
 118.0 379.95  
 GND CON  
 121.1 270.8 E of 1R/19L  
 121.9 254.3 W of 1R/19L  
 LAS VEGAS TOWER  
 118.75 257.8 (Rwy 1L/19R, 1R/19L)  
 119.9 257.8 (Rwy 7L/25R, 7R/25L)  
 LAS VEGAS DEP CON  
 125.9 307.25



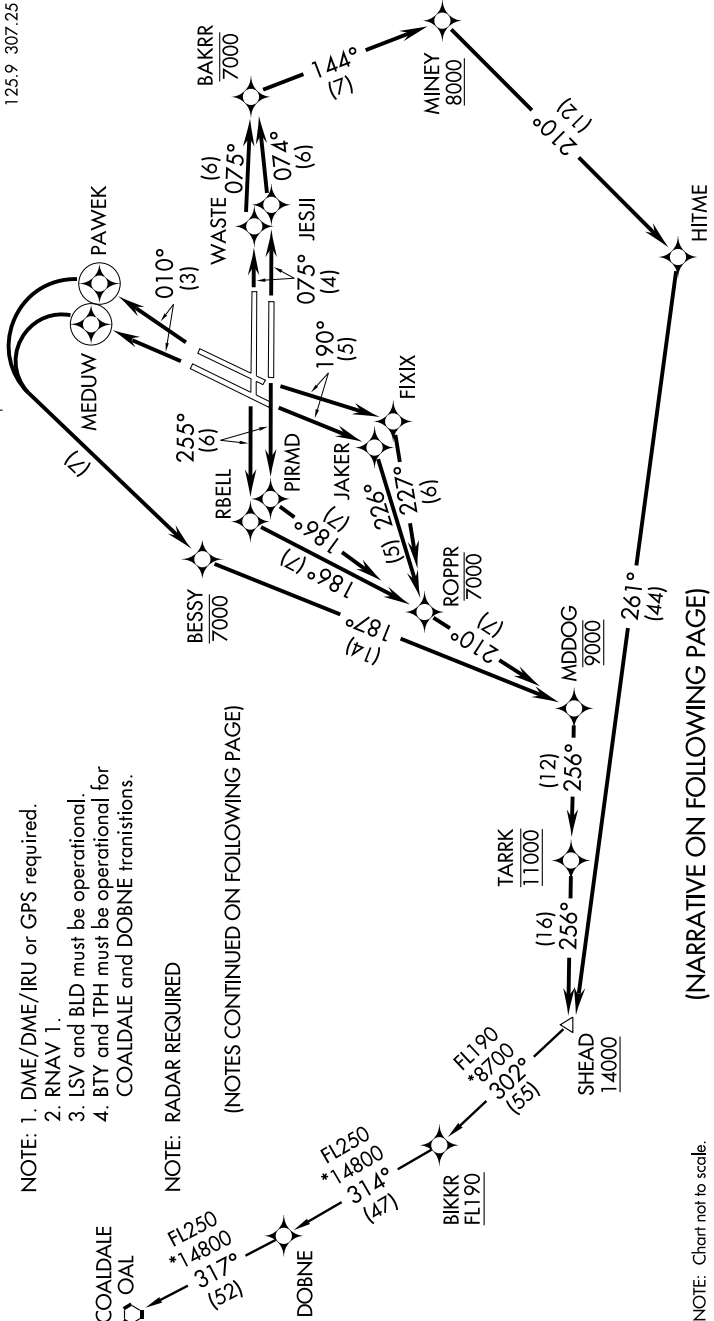
**TAKE-OFF MINIMUMS**  
 Runway 1L, 1100-3 with minimum climb of 490' per NM to 7000.  
 Runway 1R, 1100-3 with minimum climb of 500' per NM to 7000.  
 Runways 7L/R, standard with minimum climb of 400' per NM to 8000.  
 Runways 19L/R, standard with minimum climb of 408' per NM to 9000.  
 Runway 25L, standard with minimum climb of 382' per NM to 9000.  
 Runway 25R, standard with minimum obstacle climb of 220' per NM to 2400, ATC climb of 387' per NM to 9000.

- NOTE:** 1. DME/DME/IRU or GPS required.  
 2. RNAV 1.  
 3. LSV and BLD must be operational.  
 4. BTY and TPH must be operational for COALDALE and DOBNE transitions.

**NOTE:** RADAR REQUIRED

(NOTES CONTINUED ON FOLLOWING PAGE)

**NOTE:** Chart not to scale.



(NARRATIVE ON FOLLOWING PAGE)

SW-4, 17 DEC 2009 to 14 JAN 2010

# SHEAD FIVE DEPARTURE (RNAV)