

LAS VEGAS, NEVADA

AL-662 (FAA)

# ILS or LOC RWY 25L

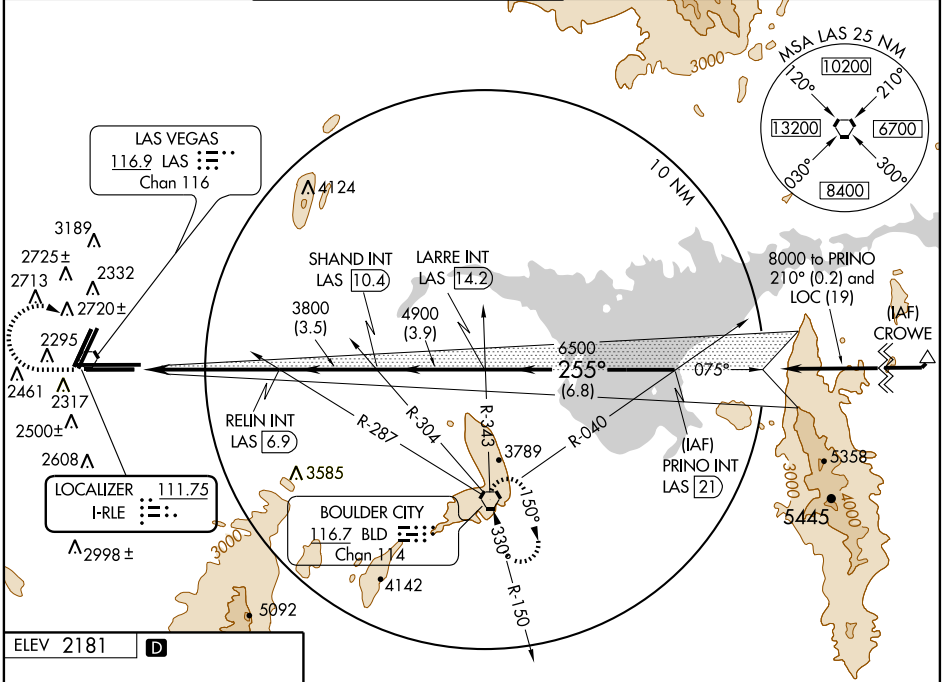
LAS VEGAS/MC CARRAN INTL (LAS)

LOC I-RLE <b>111.75</b>	APP CRS <b>255°</b>	Rwy Idg 25L TDZE Apt Elev	<b>10526</b> <b>2069</b> <b>2181</b>	Rwy Idg 25R TDZE Apt Elev	<b>12755</b> <b>2067</b> <b>2181</b>
----------------------------	------------------------	---------------------------------	--	---------------------------------	--

**⚠** Inoperative table does not apply to S-LOC 25L  
**⚠** Cat C and Sidestep 25R Cats A and B.

**MISSED APPROACH:** Climb to 3000 then climbing right turn to 6000 direct BLD VORTAC and hold.

ATIS <b>132.4</b>	LAS VEGAS APP CON <b>125.025 379.15</b>	LAS VEGAS TOWER <b>118.75 257.8</b> (Rwy 1L/19R, 1R/19L) <b>119.9 257.8</b> (Rwy 7L/25R, 7R/25L)	GND CON <b>121.1 270.8</b> E of 1R/19L <b>121.9 254.3</b> W of 1R/19L	CLNC DEL <b>118.0 379.95</b>
----------------------	--	--	---	---------------------------------

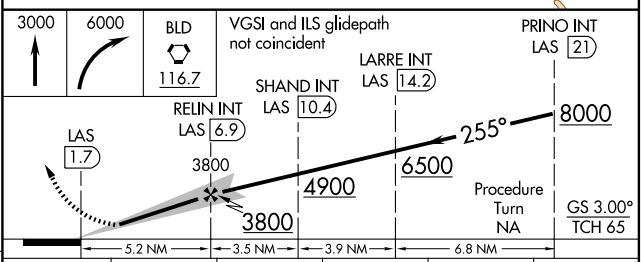


SW-4, 17 DEC 2009 to 14 JAN 2010

SW-4, 17 DEC 2009 to 14 JAN 2010

ELEV 2181 **D**

Knots	60	90	120	150	180
Min:Sec	5:12	3:28	2:36	2:05	1:44



CATEGORY	A	B	C	D	E
S-ILS 25L	2269-3/4 200 (100-3/4)				
S-LOC 25L	2540-3/4 471 (400-3/4)	2540-1 471 (400-1)	2540-1 1/4 471 (400-1 1/4)	2540-1 1/2 471 (400-1 1/2)	2540-1 3/4 471 (400-1 3/4)
SIDESTEP RWY 25R	2540-1 473 (400-1)		2540-1 1/2 473 (400-1 1/2)		
CIRCLING	3020-1 839 (900-1)	3020-1 1/4 839 (900-1 1/4)	3020-2 1/2 839 (900-2 1/2)	3020-2 3/4 839 (900-2 3/4)	3540-3 1359 (1400-3)

LAS VEGAS, NEVADA  
Amdt 3B 09351

36°05'N-115°09'W

# LAS VEGAS/MC CARRAN INTL (LAS)

## ILS or LOC RWY 25L