

LAS VEGAS, NEVADA

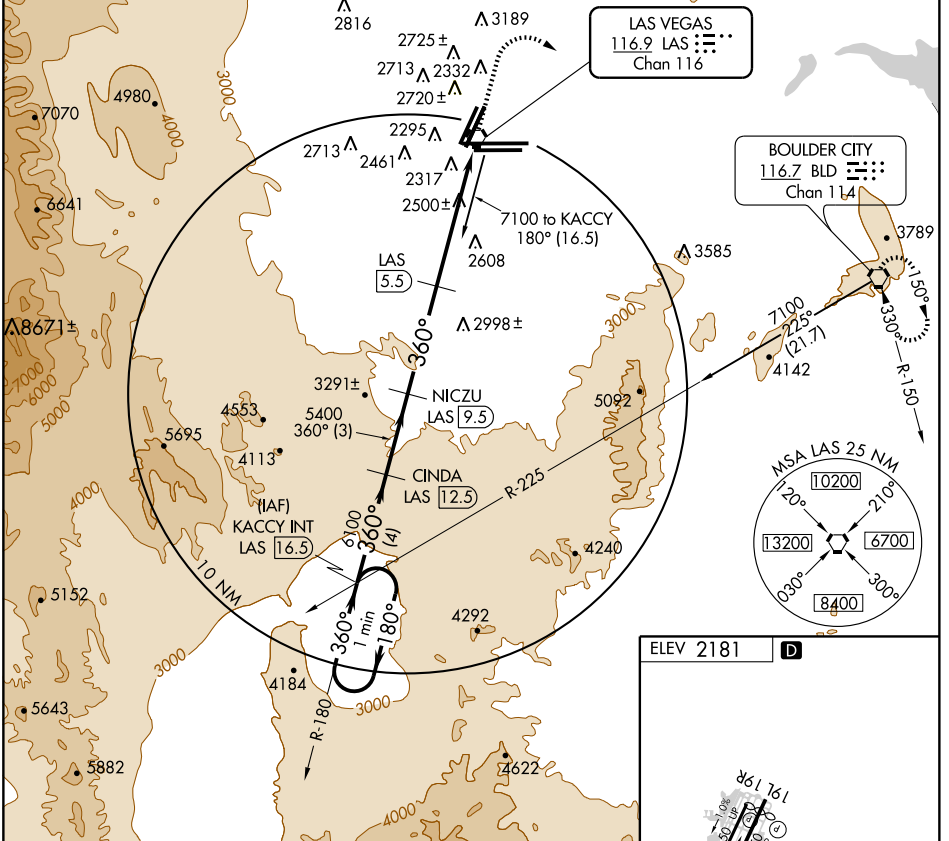
AL-662 (FAA)

VORTAC LAS 116.9 Chan 116	APP CRS 360°	Rwy Idg TDZE Apt Elev	N/A N/A 2181
--	------------------------	-----------------------------	---

VOR/DME-A

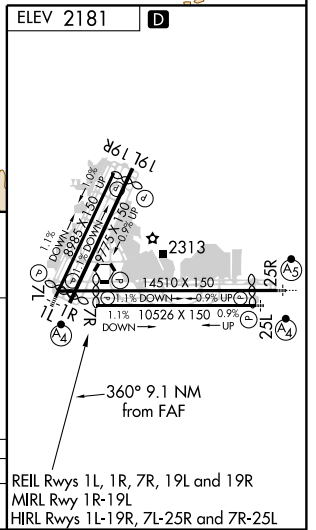
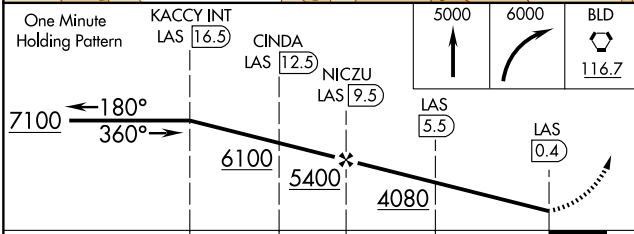
LAS VEGAS/MC CARRAN INTL (LAS)

<p>ATIS 132.4</p> <p>LAS VEGAS APP CON 125.025 379.15</p>		<p>LAS VEGAS TOWER 118.75 257.8 (Rwy 1L/19L, 1R/19L) 119.9 257.8 (Rwy 7L/25R, 7R/25L)</p>		<p>GND CON 121.1 270.8 E of 1R/19L 121.9 254.3 W of 1R/19L</p>		<p>CLNC DEL 118.0 379.95</p>	
---	--	--	--	---	--	--	--



SW-4, 17 DEC 2009 to 14 JAN 2010

SW-4, 17 DEC 2009 to 14 JAN 2010



CATEGORY	A	B	C	D
CIRCLING	3020-1 839 (900-1)	3020-1¼ 839 (900-1¼)	3020-2½ 839 (900-2½)	3020-2¾ 839 (900-2¾)

LAS VEGAS, NEVADA
Orig-C 09351

36°05'N-115°09'W

LAS VEGAS/MC CARRAN INTL (LAS)
VOR/DME-A