

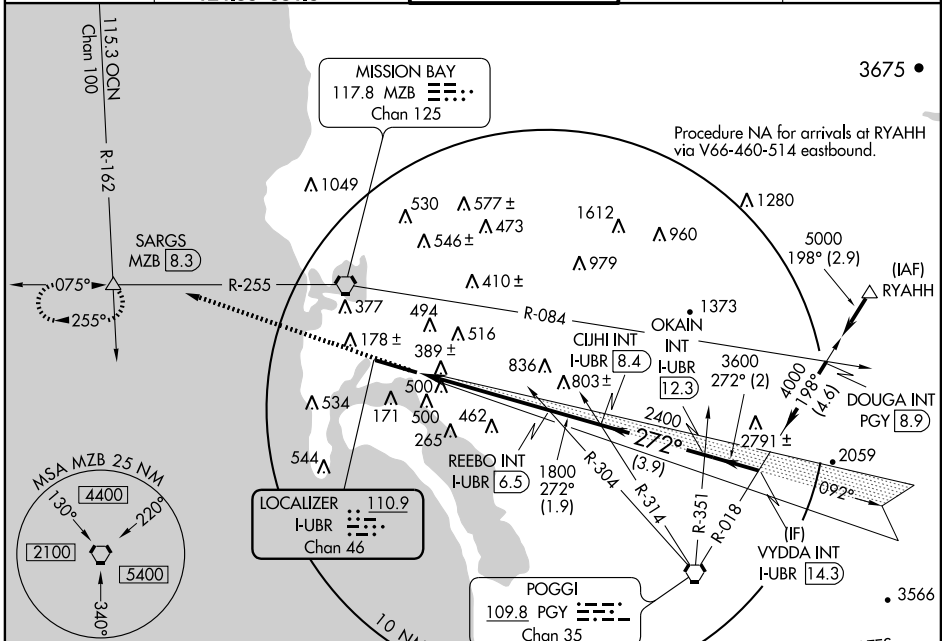
LOC/DME I-UBR <b>110.9</b> Chan 46	APP CRS <b>272°</b>	Rwy Idg TDZE Apt Elev	<b>7591</b> <b>17</b> <b>17</b>
------------------------------------------	------------------------	-----------------------------	---------------------------------------

# LOC RWY 27

SAN DIEGO INTL (SAN)

<p><b>▼</b> Inoperative table does not apply. <b>▲</b> Visibility reduction by helicopters NA.</p>	MALS -	MISSED APPROACH: Climb to 2500 via heading 275° and MZB VORTAC R-255 to SARGs INT/8.3 DME and hold.
	(A4)	

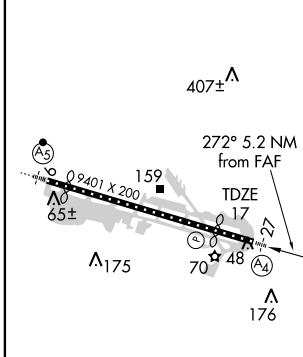
ATIS <b>134.8</b>	SOCAL APP CON <b>119.6 363.1</b> WEST <b>124.35 381.5</b> EAST	LINDBERGH TOWER <b>118.3 338.225</b>	GND CON <b>123.9</b>	CLNC DEL <b>125.9</b>
----------------------	----------------------------------------------------------------------	-----------------------------------------	-------------------------	--------------------------



SW-3, 20 NOV 2008 to 18 DEC 2008

SW-3, 20 NOV 2008 to 18 DEC 2008

ELEV 17
---------



TDZ/CL Rwy 9 and 27 HIRL Rwy 9-27					
FAF to MAP 5.2 NM					
Knots	60	90	120	150	180
Min:Sec	5:12	3:28	2:36	2:05	1:44



2500	MZB R-255 117.8	SARGs	VGSI and descent angles not coincident.	4000
275°				Procedure Turn NA
	I-UBR 1.3	REEBO INT I-UBR 6.5	3600	
		3.14° TCH 50	2400	
			1800	
			272°	
			3600	
			4000	
			272°	
			3600	
			4000	

CATEGORY	A	B	C	D
S-27	640/50	623 (700-1)	640-1¾ 623 (700-1¾)	640-2 623 (700-2)
CIRCLING	820-1 803 (900-1)	820-1¼ 803 (900-1¼)	820-2¼ 803 (900-2¼)	820-2½ 803 (900-2½)