

GPS RWY 12R

LAS VEGAS/NORTH LAS VEGAS (VGT)

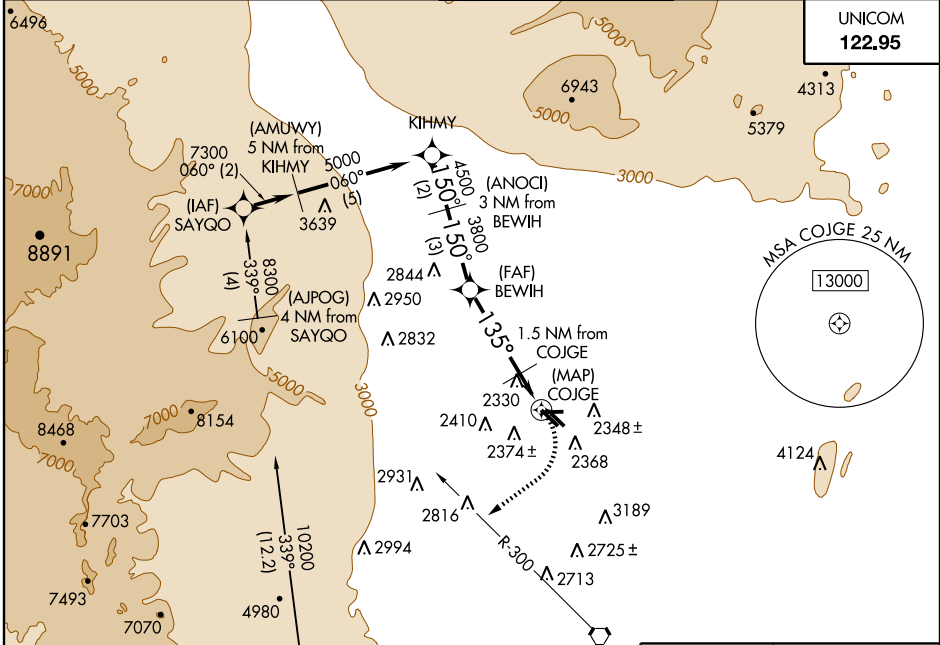
APP CRS	Rwy Idg	5000
135°	TDZE	2205
	Apt Elev	2205

NA When local altimeter setting not received, use McCarran Intl altimeter setting and increase all MDA 40 feet and S-12R Cat D visibility ¼ mile. Circling to Rwy 12L-30R NA.

MISSED APPROACH: Climbing right turn to 4000 via heading 220° and LAS R-300 to LAS VORTAC.

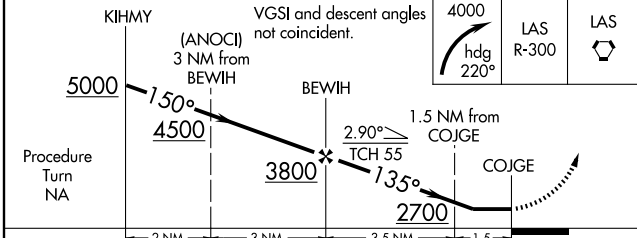
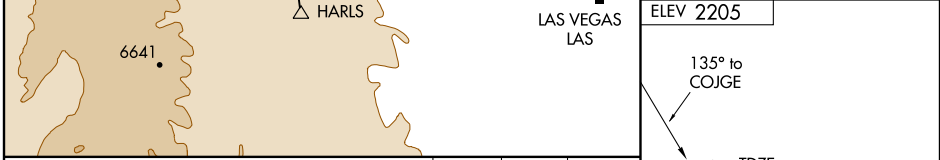
ATIS 118.05	LAS VEGAS APP CON Rwy 30 119.4 282.2	NELLIS APP CON Rwy 12 118.125 291.725	NORTH LAS VEGAS TOWER* 125.7 (CTAF) 360.75	GND CON 121.7	CLNC DEL 124.0
-----------------------	---	--	--	-------------------------	--------------------------

UNICOM
122.95



SW-4, 03 JUN 2010 to 01 JUL 2010

SW-4, 03 JUN 2010 to 01 JUL 2010



CATEGORY	A	B	C	D
S-12R	2620-1	415 (500-1)	2620-1¼	415 (500-1¼)
CIRCLING	2680-1	475 (500-1)	2680-1½	2760-2 555 (600-2)

MRL Rwy 7-25, 12R-30L and 12L-30R

GPS RWY 12R