

LAS VEGAS, NEVADA

AL-6970 (FAA)

# GPS RWY 30L

LAS VEGAS/NORTH LAS VEGAS (V/GT)

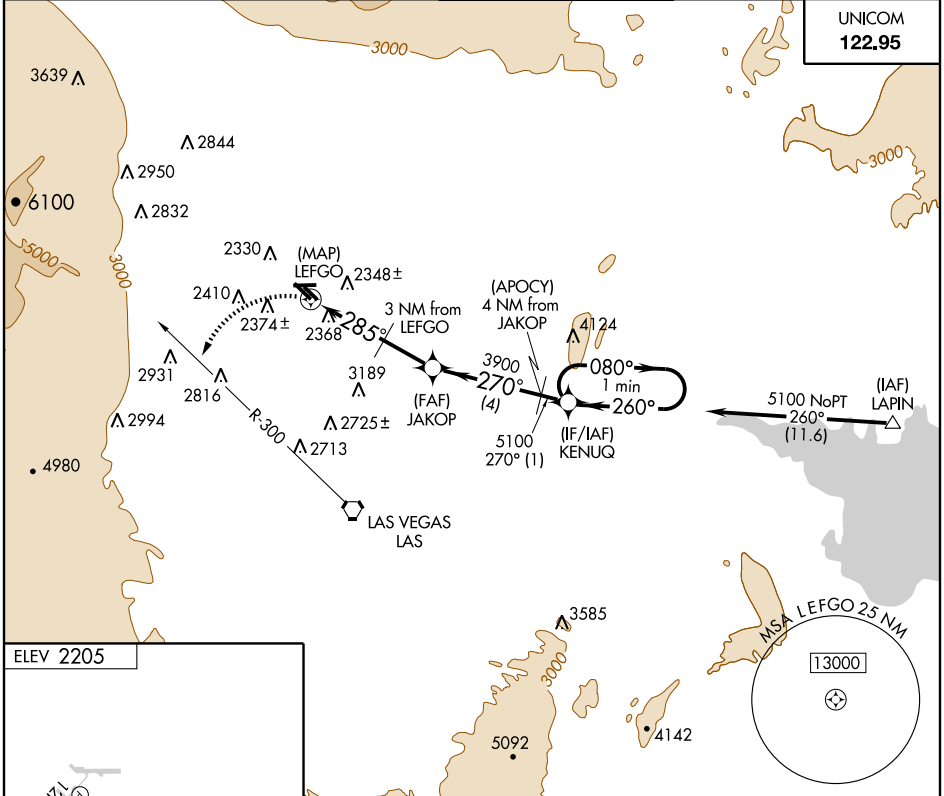
APP CRS	Rwy Idg	<b>5000</b>
<b>285°</b>	TDZE	<b>2191</b>
	Apt Elev	<b>2205</b>

**NA** When local altimeter setting not received, use McCarron Intl altimeter setting and increase all MDA 40 feet and S-30L Cats C/D visibility ¼ mile. Circling to Rwy 12L-30R NA.

**MISSED APPROACH:** Climbing left turn to 4000 via heading 220° and LAS R-300 to LAS VORTAC.

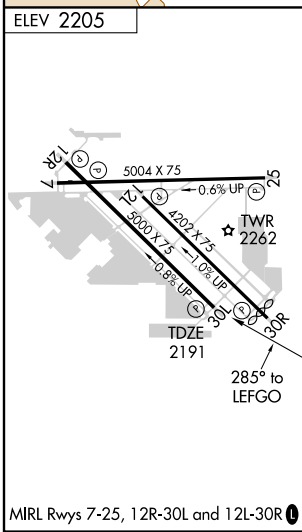
ATIS <b>118.05</b>	LAS VEGAS APP CON Rwy 30 <b>119.4 282.2</b>	NELLIS APP CON Rwy 12 <b>118.125 291.725</b>	NORTH LAS VEGAS TOWER* <b>125.7 (CTAF) 360.75</b>	GND CON <b>121.7</b>	CLNC DEL <b>124.0</b>
-----------------------	---	--	--	-------------------------	--------------------------

UNICOM <b>122.95</b>
-------------------------



SW-4, 03 JUN 2010 to 01 JUL 2010

SW-4, 03 JUN 2010 to 01 JUL 2010



	One Minute Holding Pattern																		
<table border="1"> <thead> <tr> <th>CATEGORY</th> <th>A</th> <th>B</th> <th>C</th> <th>D</th> </tr> </thead> <tbody> <tr> <td>S-30L</td> <td>2680-1</td> <td>489 (500-1)</td> <td>2680-1¼ 489 (500-1¼)</td> <td>2680-1½ 489 (500-1½)</td> </tr> <tr> <td>CIRCLING</td> <td>2720-1</td> <td>515 (600-1)</td> <td>2720-1½ 515 (600-1½)</td> <td>2760-2 555 (600-2)</td> </tr> </tbody> </table>	CATEGORY	A	B	C	D	S-30L	2680-1	489 (500-1)	2680-1¼ 489 (500-1¼)	2680-1½ 489 (500-1½)	CIRCLING	2720-1	515 (600-1)	2720-1½ 515 (600-1½)	2760-2 555 (600-2)				
CATEGORY	A	B	C	D															
S-30L	2680-1	489 (500-1)	2680-1¼ 489 (500-1¼)	2680-1½ 489 (500-1½)															
CIRCLING	2720-1	515 (600-1)	2720-1½ 515 (600-1½)	2760-2 555 (600-2)															

LAS VEGAS, NEVADA  
Orig-B 10154

36°13'N - 115°12'W

LAS VEGAS/NORTH LAS VEGAS (V/GT)  
**GPS RWY 30L**