

LAS VEGAS, NEVADA

AL-6970 (FAA)

ILS or LOC RWY 12L

LAS VEGAS/NORTH LAS VEGAS (VGT)

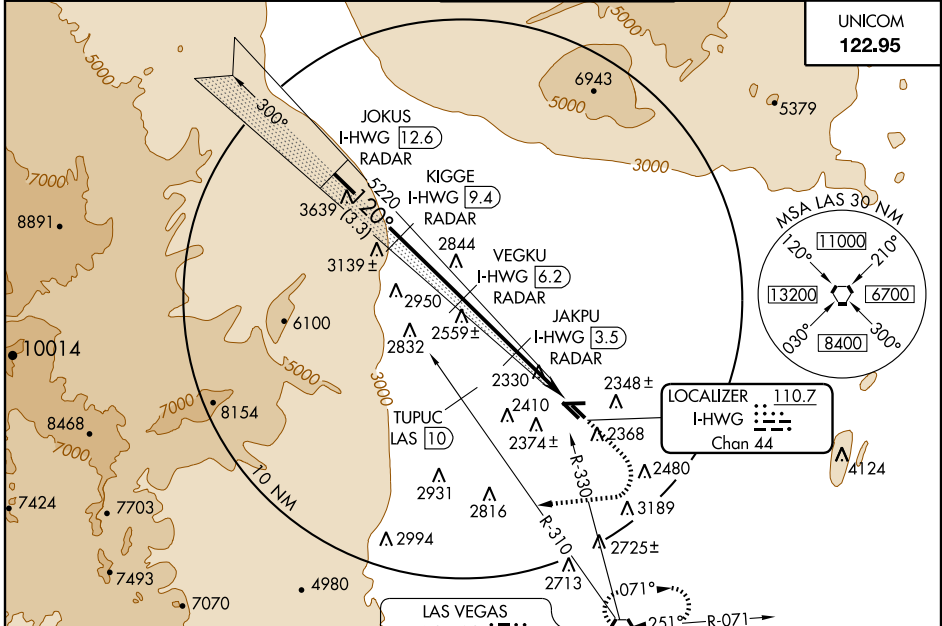
| | | | |
|--|------------------------|-----------------------------|---|
| LOC/DME I-HWGW 110.7 Chan 44 | APP CRS 120° | Rwy Idg TDZE Apt Elev | 4202 2189 2205 |
|--|------------------------|-----------------------------|---|

⚠ When local altimeter setting not received, use McCarran Intl altimeter setting and increase DA to 2478, and visibility Cats A/B ¼ mile; increase all MDA 40 feet. DME and RADAR required.

MISSED APPROACH: Climb to 2600, then climbing right turn heading 250° to 6000, intercept LAS R-310 outbound to TUPUC/LAS 10 DME then turn right via LAS R-330 inbound to LAS VORTAC and hold.

| | | | | | |
|-----------------------|---|--|--|-------------------------|--------------------------|
| ATIS 118.05 | LAS VEGAS APP CON Rwy 30 119.4 282.2 | NELLIS APP CON Rwy 12 118.125 291.725 | NORTH LAS VEGAS TOWER* 125.7 (CTAF) 360.75 | GND CON 121.7 | CLNC DEL 124.0 |
|-----------------------|---|--|--|-------------------------|--------------------------|

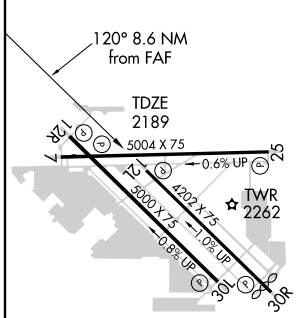
UNICOM
122.95



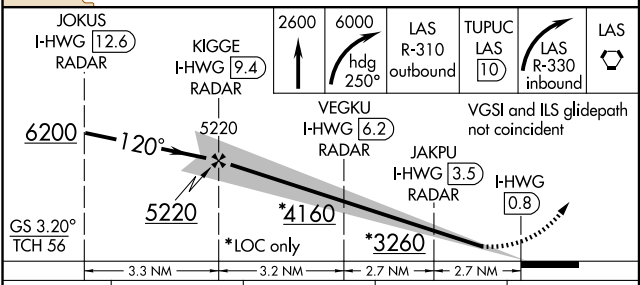
SW-4, 03 JUN 2010 to 01 JUL 2010

SW-4, 03 JUN 2010 to 01 JUL 2010

ELEV 2205



DME and RADAR REQUIRED



| CATEGORY | A | B | C | D |
|-----------|--------|-------------|---|----|
| S-ILS 12L | 2456-1 | 267 (300-1) | | NA |
| S-LOC 12L | 2580-1 | 391 (400-1) | | NA |
| CIRCLING | 2680-1 | 475 (500-1) | | NA |

MIRL Rwys 7-25, 12R-30L and 12L-30R

FAF to MAP 8.6 NM

| | | | | | |
|---------|------|------|------|------|------|
| Knots | 60 | 90 | 120 | 150 | 180 |
| Min:Sec | 8:36 | 5:44 | 4:18 | 3:26 | 2:52 |

LAS VEGAS, NEVADA
Orig-B 10154

36°13'N-115°12'W

ILS or LOC RWY 12L

LAS VEGAS/NORTH LAS VEGAS (VGT)